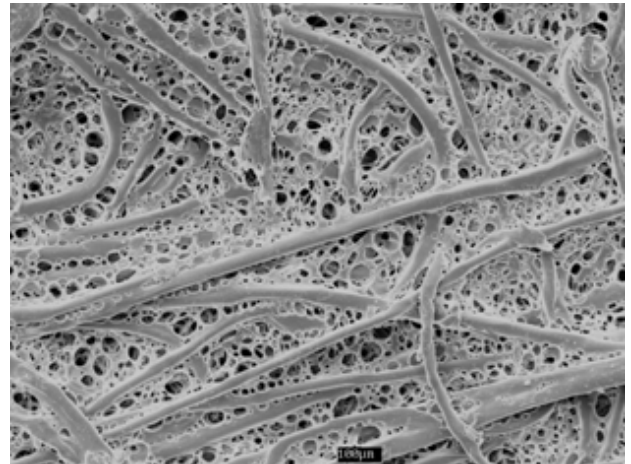
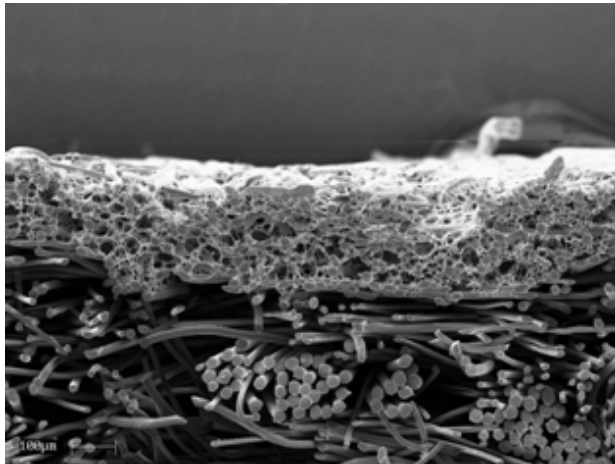


NOVATES TREATMENT:

Testori's "Novates" is an **urethane based**, "partially embedded" surface treatment typically applied to **polyester and homopolymer acrylic needle felts**.

What distinguishes Novates from other surface treatments is its application: by partially embedding the emulsion during treatment, Novates retains a portion of the fibrous layer (left picture below) of a needled felt while adding the higher separation structure of the cellular urethane (right picture below).



MAIN CHARACTERISTICS:

- Higher efficiency when separating fine or sticky dusts
- Excellent solution for fibrous dusts
- Surface separation instead of depth filtration
- Emissions below 1 mg/Nm³ or 0.0004 grains/dscf possible with some kinds of dust

END USES:

Fibrous dusts (both organic and synthetic), sticky dusts, battery manufacturing, stearates and resins production, minerals, chemicals, cement and lime industry.